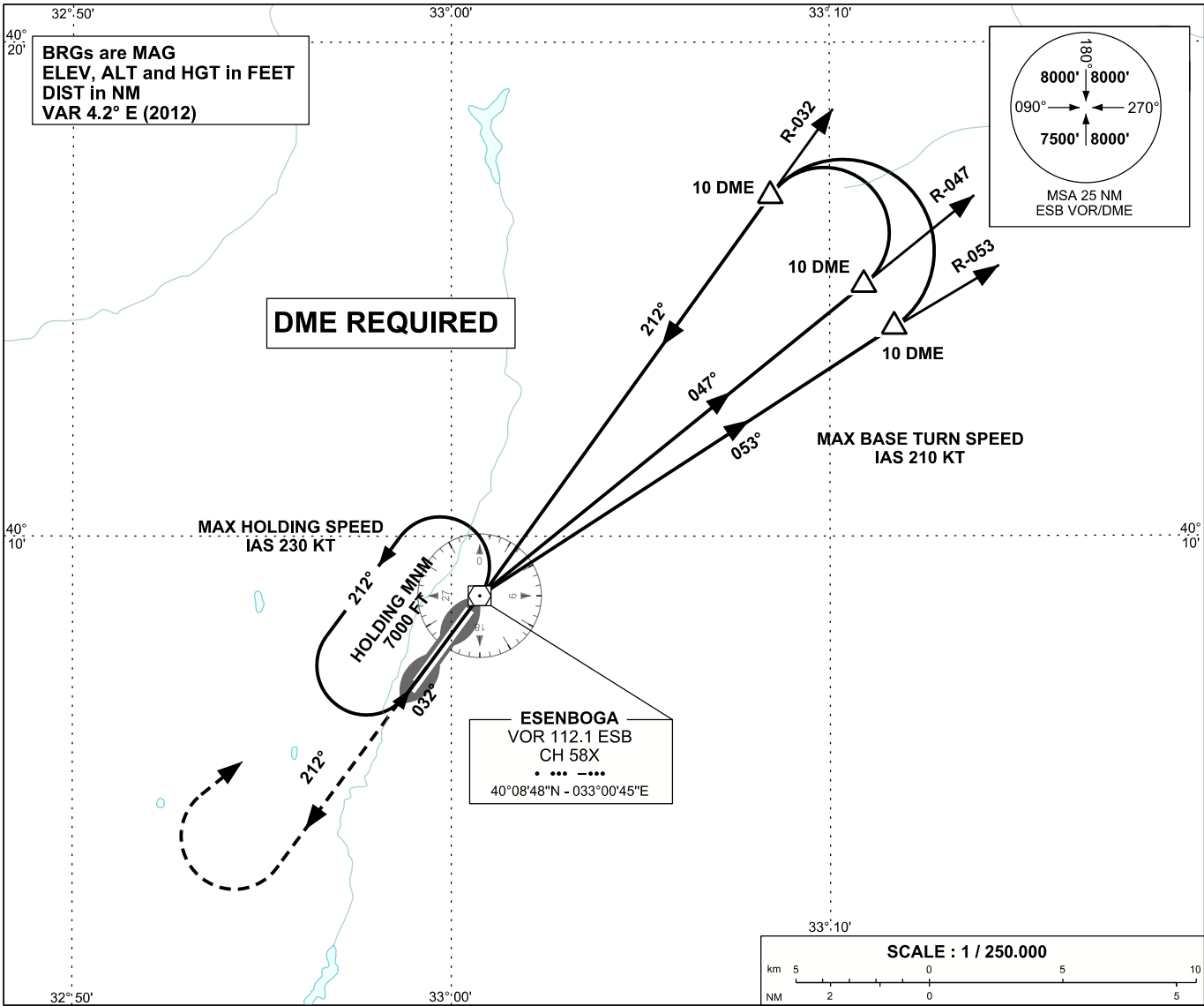


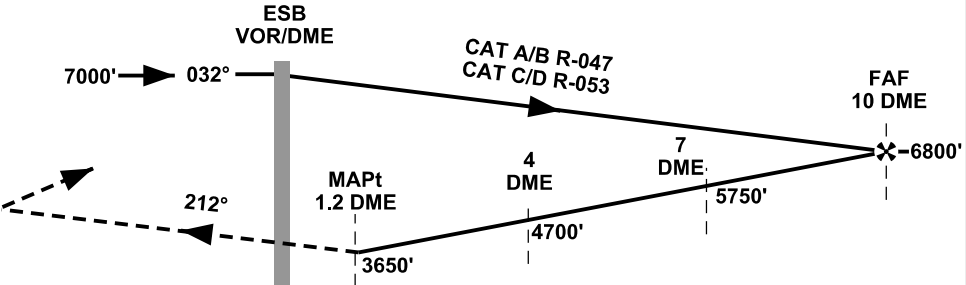
INSTRUMENT
APPROACH
CHART - ICAO

APP	119.6 - 119.1	AD ELEV	3127 FT
TWR	118.1 - 257.8	TRANSITION ALTITUDE	10 000 FT
ATIS	123.6		

ANKARA/ESENBOĞA
VOR Y
RWY 21R



MISSED APPROACH
CLIMB TO 5300 FT ON R-212 OF ESB
VOR THEN TURN RIGHT CLIMBING
TO 7000 FT PROCEED TO ESB VOR
AND HOLD.



RWY 21R THR ELEV 3124 FT

NM to/from RWY 21R	10	9	8	7	6	5	4	3	2	1	0	1	2	3	4	5	6	7	8	9	10	11
OCA (H)																						
Straight-in Approach	3650' (526')																					
Circling	3800' (673') 4650' (1523')																					